

Steatosis – reference images

The following images are from a study of the use of guideline images to improve agreement for histological estimation of steatosis.

As part of the study, a series of x4 images of fatty livers were assessed as non/mild/moderate/severe by 39 liver EQA members.

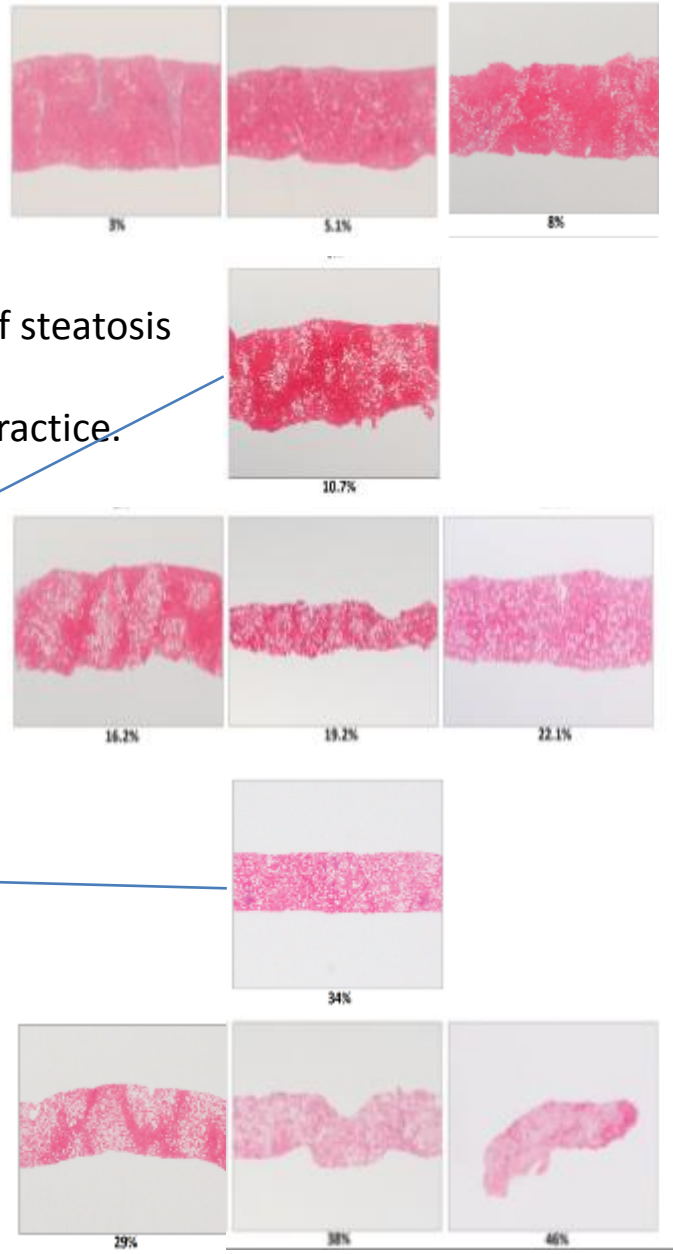
These 11 images include those with good agreement, and also 'threshold' images ordered in ascending % area of steatosis.

The aim is to improve inter-observer agreement by illustrating what the average UK liver pathologist would consider the threshold between mild/moderate and moderate/severe, in a form that can be easily used for comparison in routine practice,

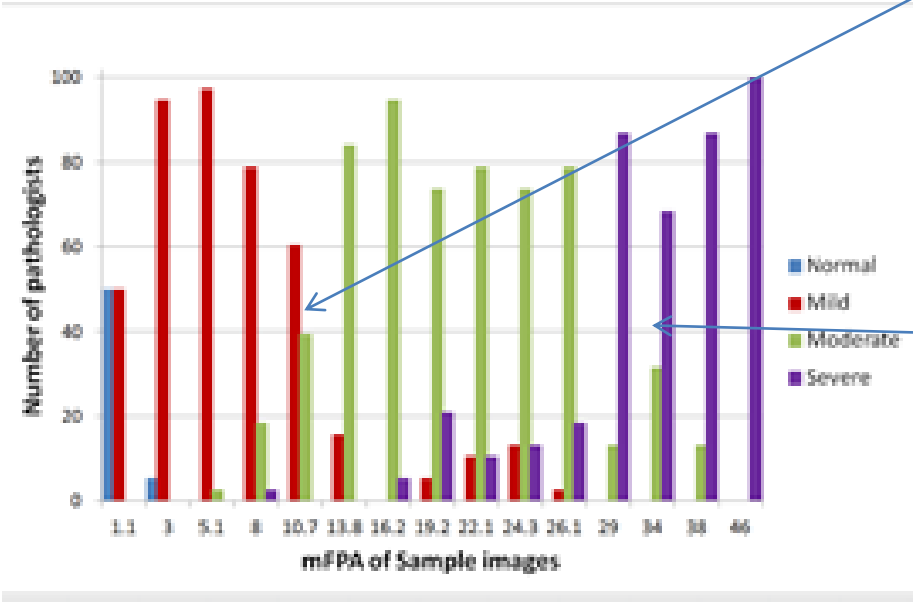
The use of guideline images to improve histological estimation of hepatic steatosis.

15 images at x4 magnification, representing the full range of steatosis
 39 liver EQA scheme pathologists assessed steatosis as normal/mild/moderate/severe, according to their normal practice.

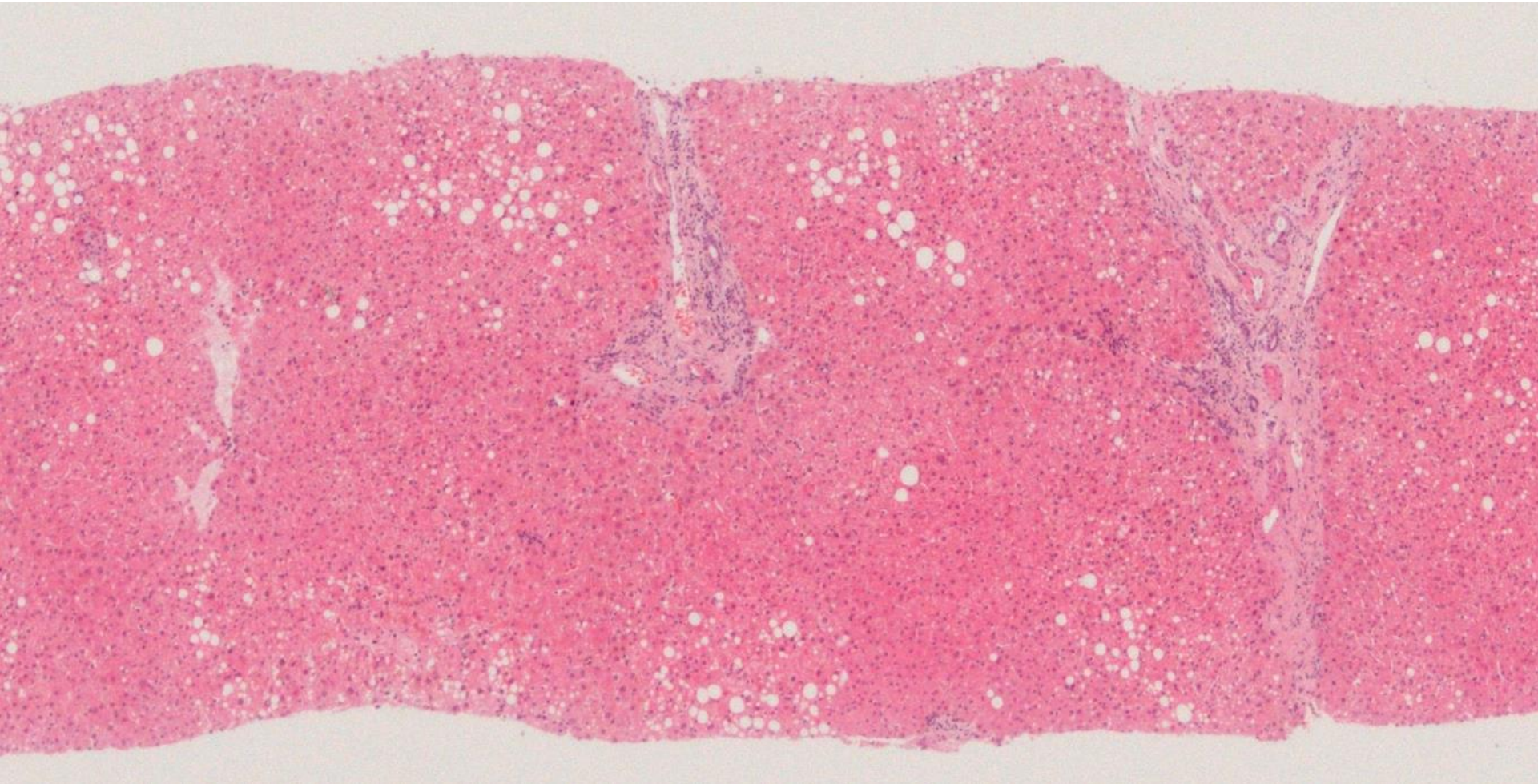
Images corresponding to mild, moderate, severe steatosis



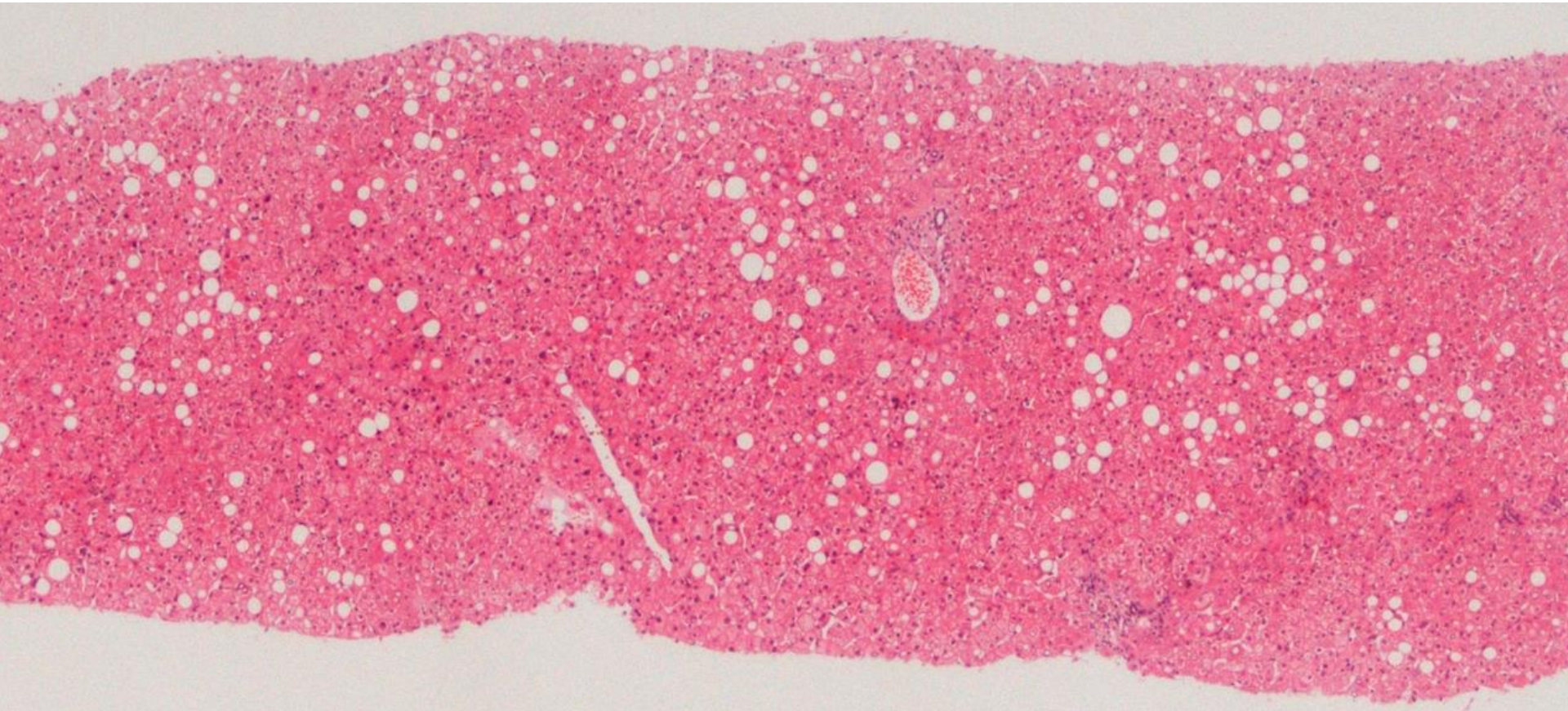
x4 OM



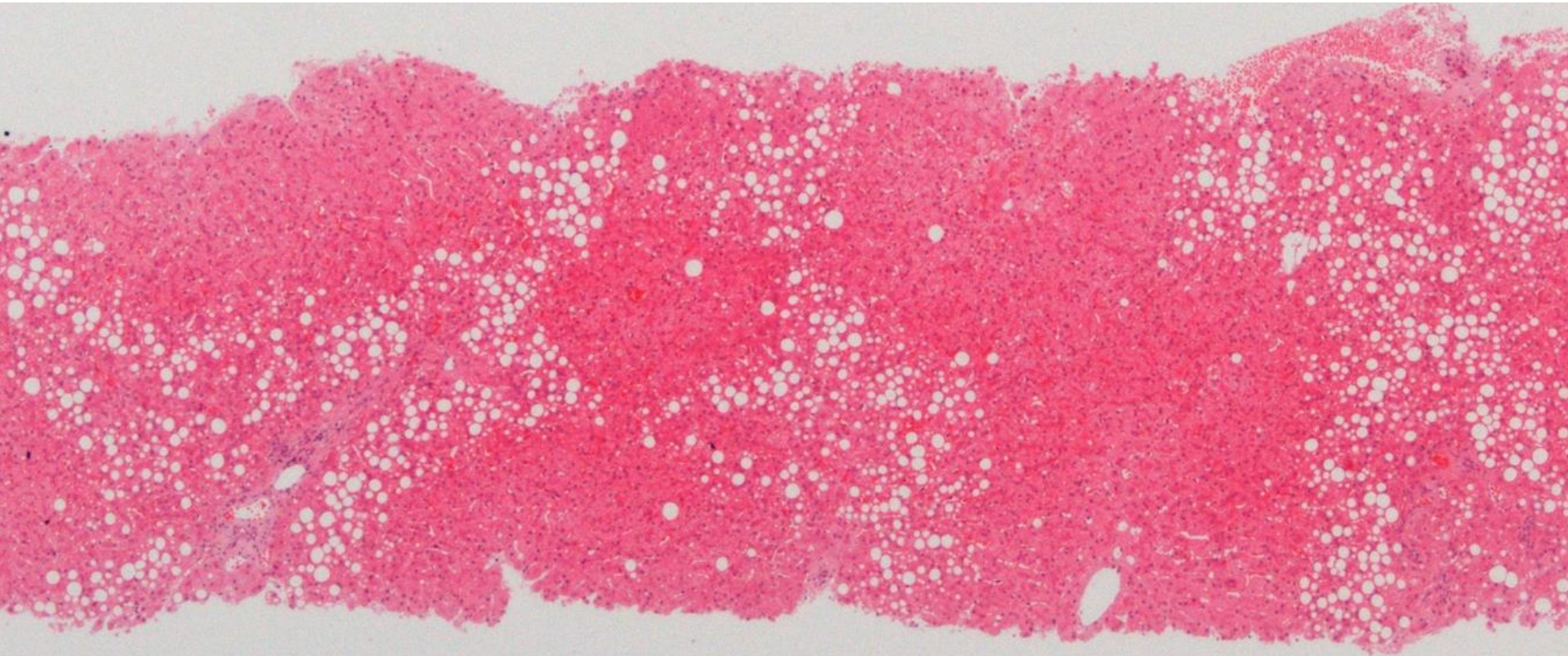
mild



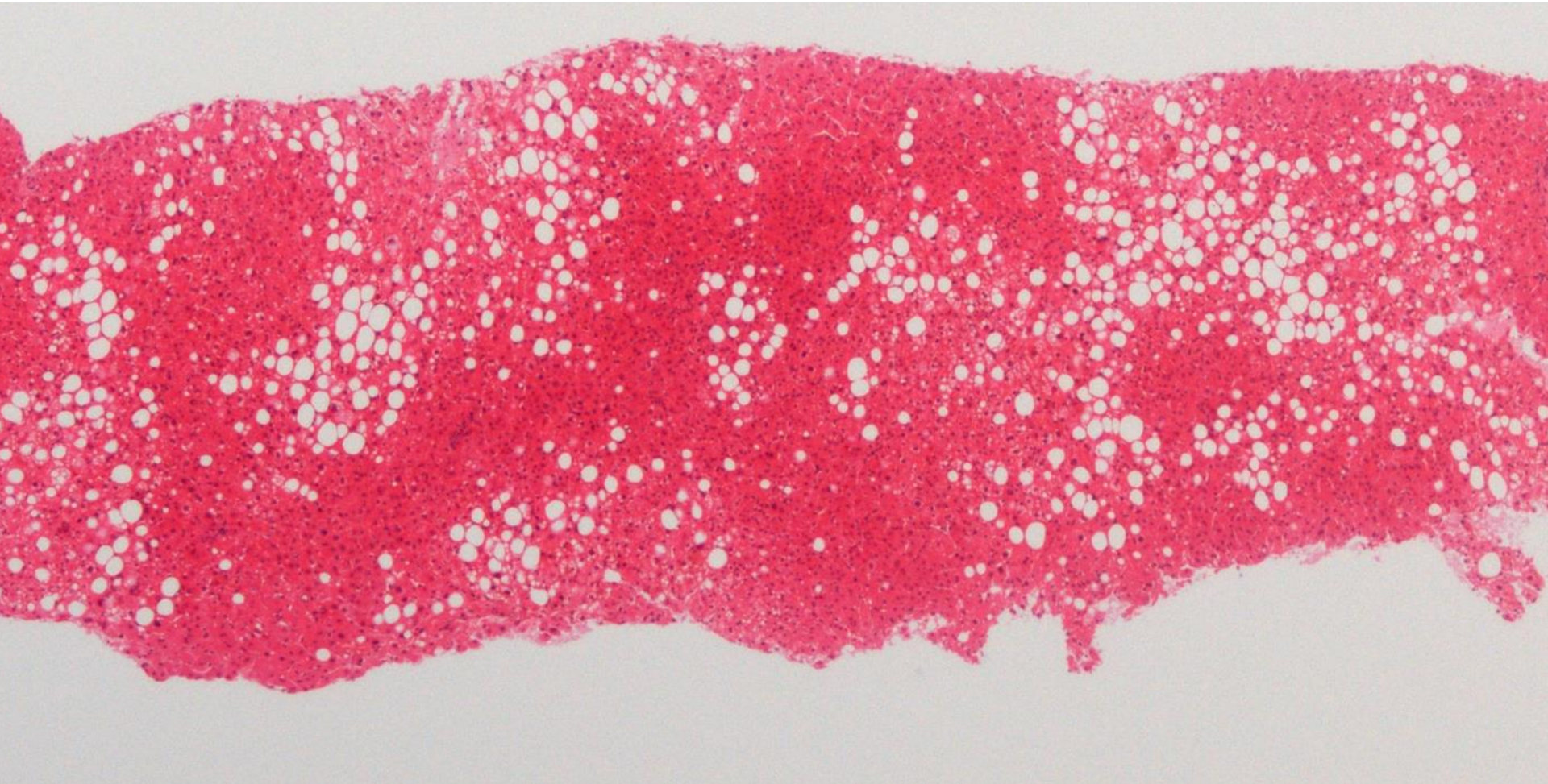
mild



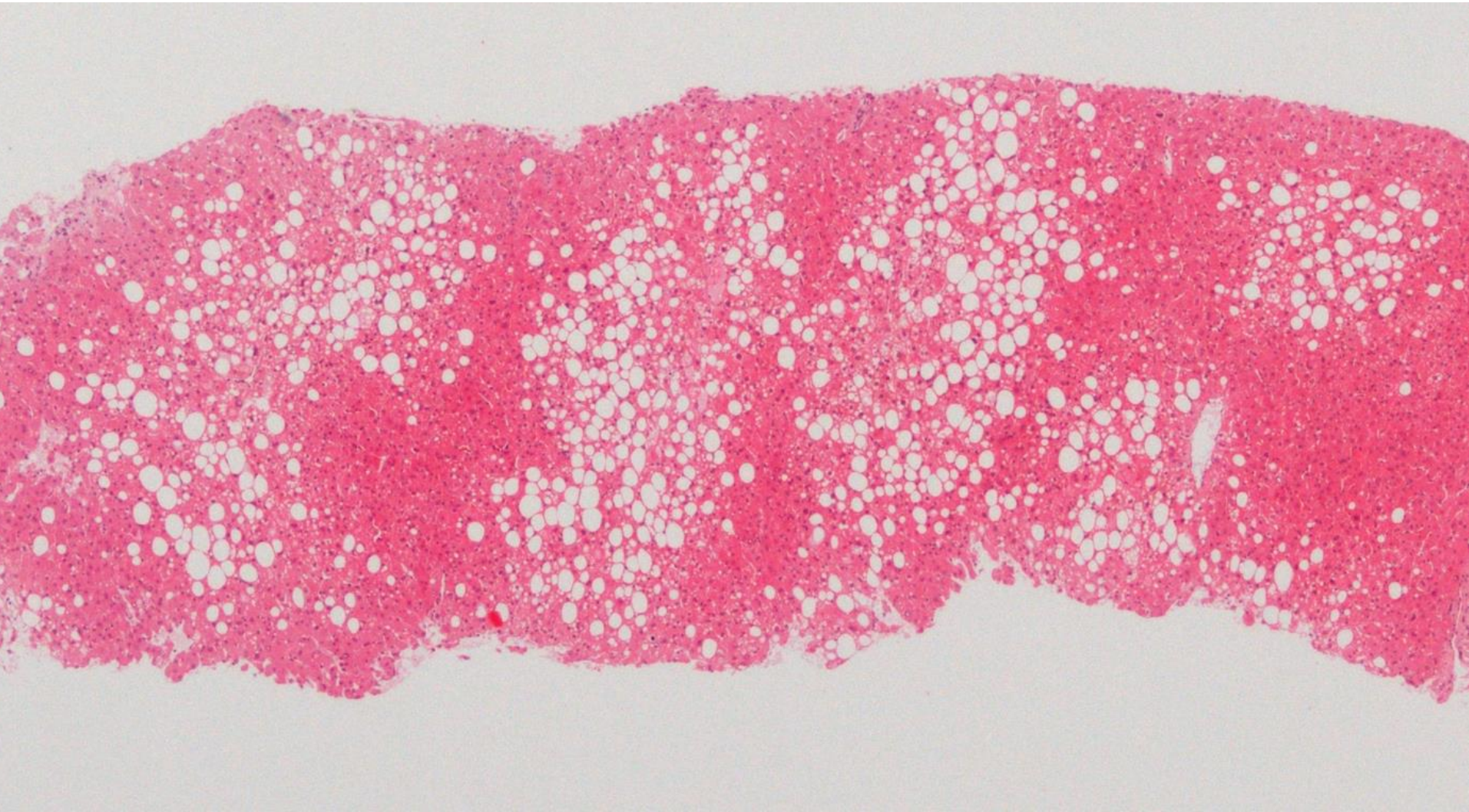
mild



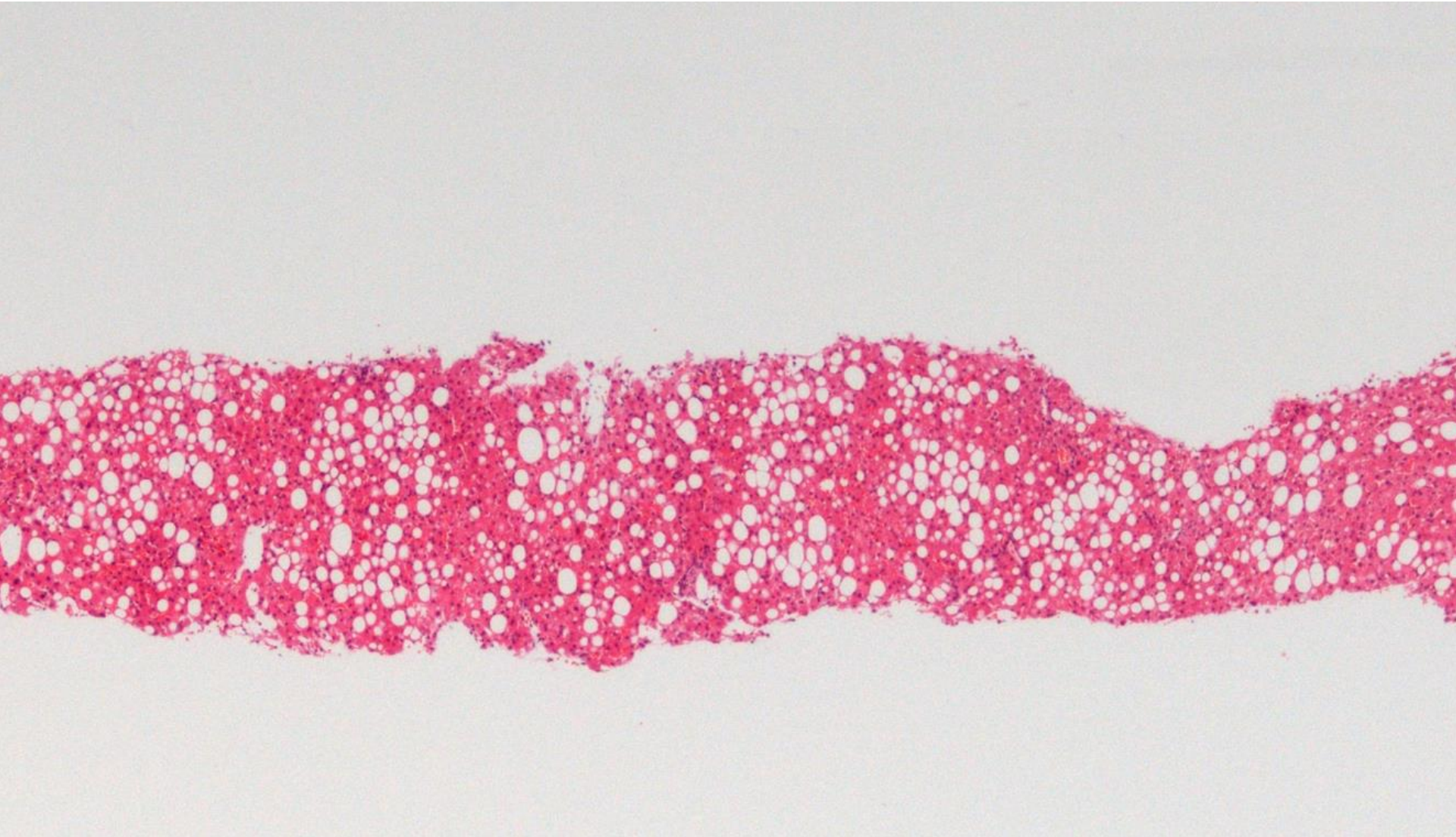
Mild - moderate



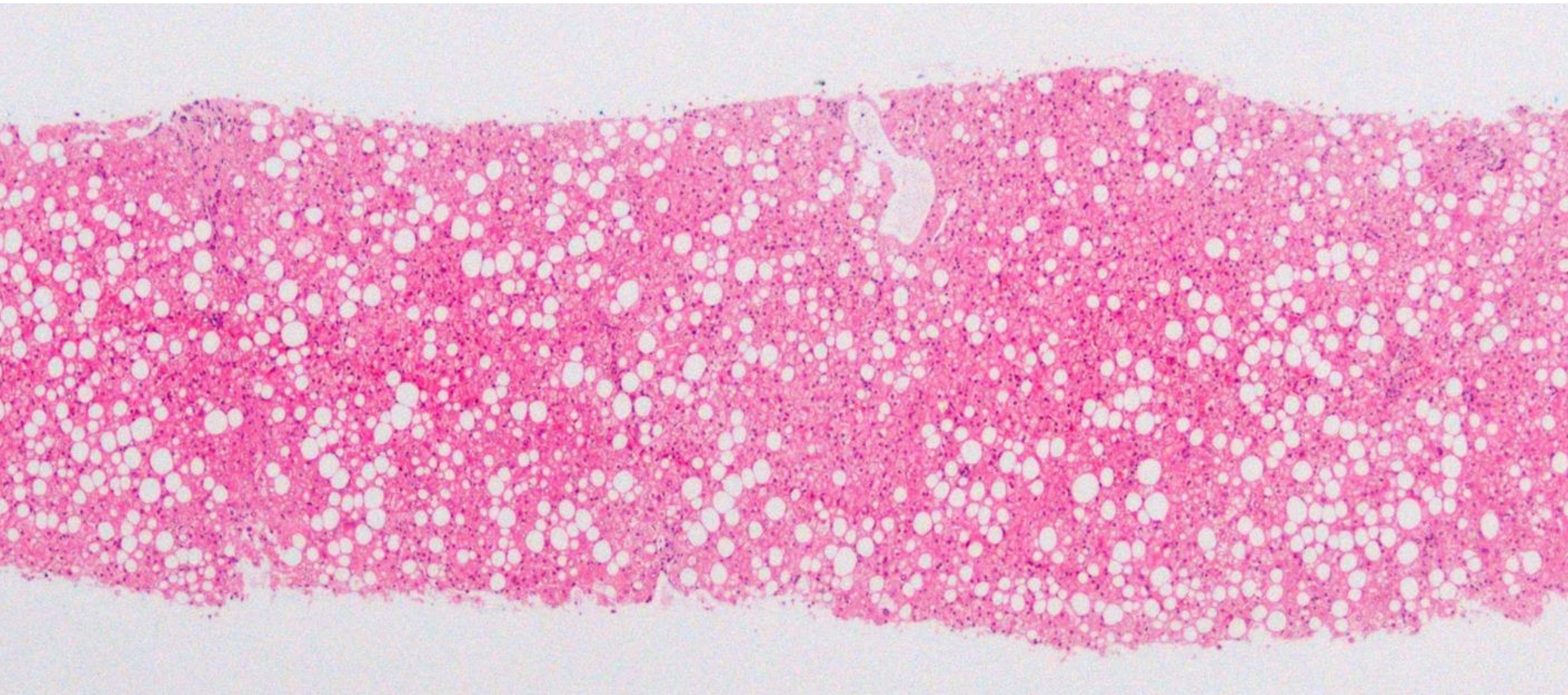
Moderate



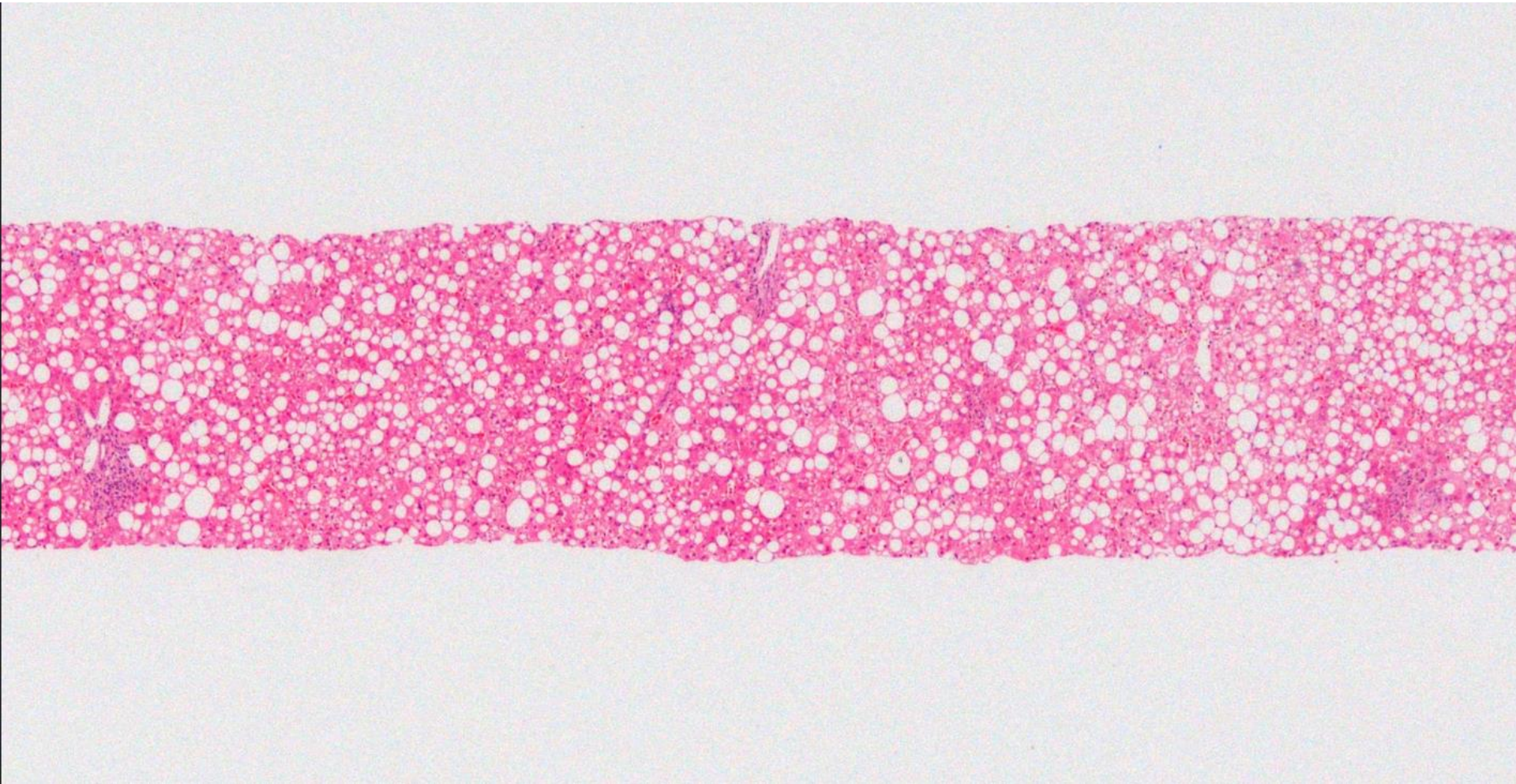
Moderate



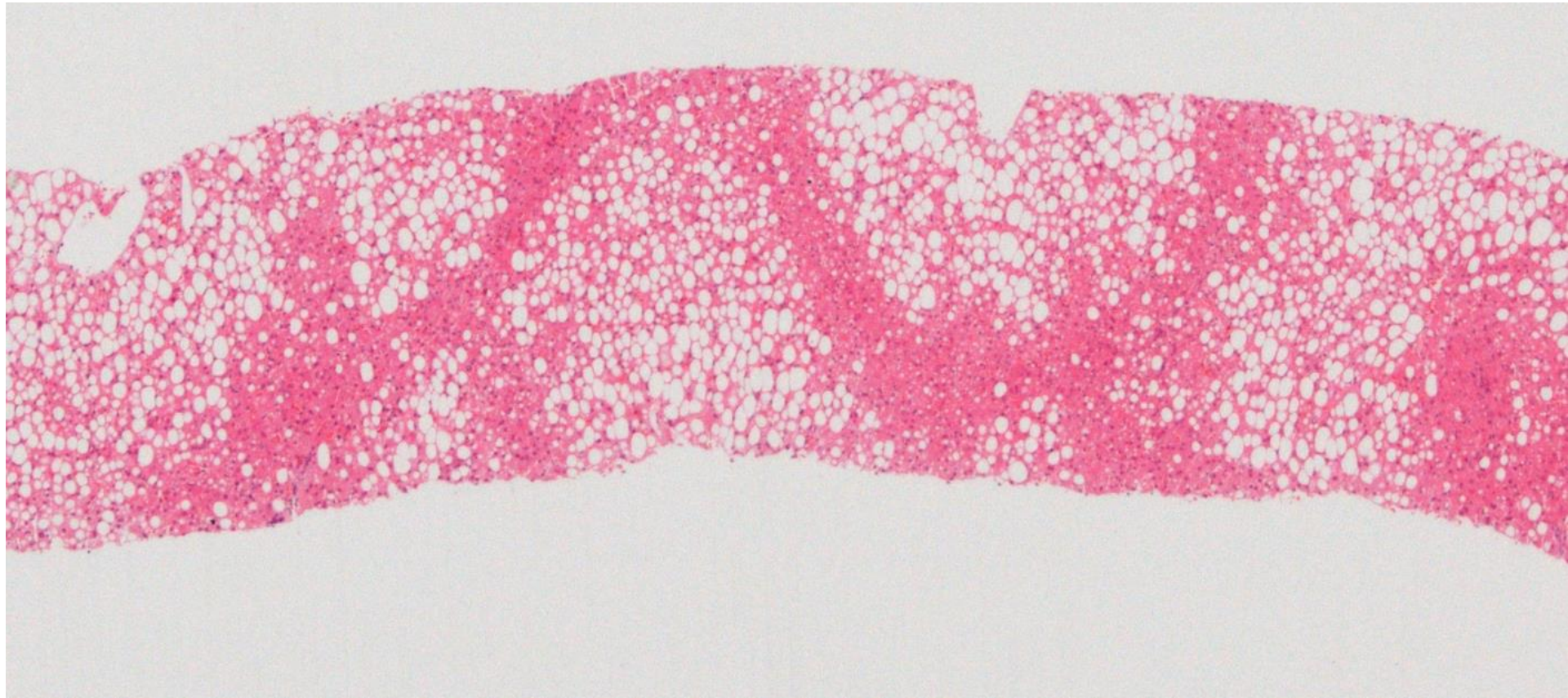
Moderate



Moderate - severe



Severe



Severe



Severe

